

## Historic, archived document

Do not assume content reflects current scientific knowledge, policies, or practices.



62.19

L.C. Transfer

SPRING-1920

LIBRARY

# HASTINGS' SEEDS



**McCASLAN  
POLE BEAN**

Packet, 15 cents;  
 ½ Pound, 30 cents;  
 Pound, 50 cents.

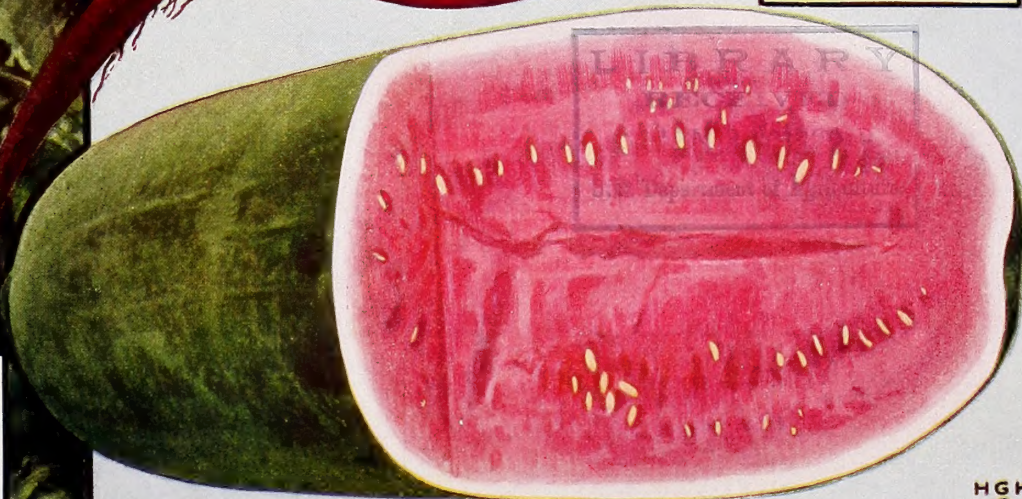


**IMPROVED  
BLOOD TURNIP BEET**

Packet, 5 cents;  
 Ounce, 10 cents;  
 ¼ Pound, 35 cents.

**KLECKLEY  
SWEET WATERMELON**

Packet, 10 cents;  
 Ounce, 15 cents;  
 ¼ Pound, 40 cents.



HGH  
©



**HASTINGS'**  
**Dollar Collection**  
**\$1.00 Postpaid**

1/2 lb. Stringless Green-Pod Beans	\$0.20	1 pkt. Kleckley Sweet Watermelon	\$0.10
1/2 lb. Kentucky Wonder Pole Beans	.20	1 pkt. White Velvet Okra	.05
1 oz. Eclipse Blood Beet	.10	1 pkt. White Bermuda Onion	.10
1 pkt. Surehead Cabbage	.10	1 pkt. Alaska Ex. Early Peas	.10
1 pkt. Eden Gem Cantaloupe	.10	1 pkt. Royal King Pepper	.10
1 pkt. Chantenay Carrot	.05	1 pkt. Early White Bush Squash	.05
1 pkt. Hastings W. Spine Cucumber	.05	1 pkt. Matchless Tomato	.10
		1 oz. Early Flat Dutch Turnip	.10
			\$1.50

**HASTINGS'**  
**Dollar Collection**  
**\$1.00 Postpaid**

**H. G. HASTINGS CO., "The South's Seedsmen," Atlanta, Georgia**

# HASTINGS' SEEDS *for* SUCCESSFUL GARDENS

## Hastings' Right Varieties of Right Quality at Right Prices

### Seeds Postpaid by Mail

Remember that the prices given in this list include delivery of all seeds in packet, ounce, quarter-pound, pound and two-pound lots of beans, peas and corn, except where noted. Send us the amount named in this catalogue, and we guarantee safe delivery by mail in these quantities.

### Liberal Premiums

Please bear in mind that on seeds in packets and ounces only (no quarter-pounds, pounds, pints or quarts), the purchaser may select 25 cents' worth extra on each dollar sent. This does not apply to orders for collections, prices of which are net.

### Cost of Sending Money

In all cases where the order for seed amounts to one dollar or more, the cost of postoffice or express money order, or cost of registering the letters from places that are not money order offices, may be deducted from the amount of the order.

### Stamps

On orders of seeds where the amount is less than 50 cents, we will accept U. S. Postage stamps in good condition (one, two, three and five-cent stamps preferred), the same as cash, but we would ask those remitting stamps to wrap them in oiled paper, if possible, to prevent their sticking together or to the order.

### About Warranty

H. G. HASTINGS CO. give no warranty, either express or implied, as to description, quality, productiveness or any other matter, of seeds, bulbs or plants they send out, and will not be in any way responsible for the crop. If purchaser does not accept the goods on these terms, they are at once to be returned, and any money that may have been paid for them will be refunded. Crops are dependent for success or failure on so many things besides seed that it is impossible for us to give any warranty or guarantee. This does not mean that we lack confidence in the seeds we sell, but we have no control over the seeds after they leave our house, especially so as to the methods of planting, cultivating and fertilizing, all of which are important factors in the success of any crop. If we should warrant or guarantee seeds in any way, we could be held responsible for the failure of the crop, regardless of cause, and this is a responsibility we cannot and will not accept. No responsible seedsman gives any warranty.

**Every Time You Order Seeds or Write to Us Be Sure and Write Your Name, Post Office and State plainly. Hundreds of Orders Are Delayed Every Year Because the Sender forgets to Sign His Name or Give His Post Office Address.**

## HASTINGS' SPRING 1920 GENERAL CATALOG

This Special Color Catalogue contains all of the best varieties of seeds for Southern planting, and is very complete for its size, but if you want to buy seeds in larger quantities and would like our 100-page, handsomely illustrated 1920 catalogue, we shall be pleased to send it to you by return mail. Just write us a letter or postal card and ask for our 1920 Spring Catalogue.

### ASPARAGUS

**PALMETTO ASPARAGUS SEED (NO. 1).**

Palmetto is the best variety for the South.

Price: Packet, 5 cents; ounce, 10 cents;

¼ pound, 25 cents; pound, 75 cents.

**PALMETTO ASPARAGUS ROOTS (NO. 2).**

Save 1½ to 2 years' time by using our splendid large 2-year-old roots.

Price: 50 roots, 85 cents; 100 for \$1.50, postpaid.

### BUSH BEANS

Plant one pound for each 75 feet of row.

**HASTINGS' EXCELSIOR REFUGEE (NO. 14).**

We recommend it fully to combine earliness, sureness of crop, quality and quantity—a fine early green podded bush bean.

**HASTINGS' STRINGLESS GREEN POD (NO. 6).**

The very best quality green podded bush bean in existence.

**HASTINGS' EXTRA EARLY RED VALENTINE (NO. 25).**

Most largely planted green bush bean in the South; a splendid heavy bearing early bean.

**IMPROVED ROUND POD REFUGEE (1000 to 1), (NO. 13).**

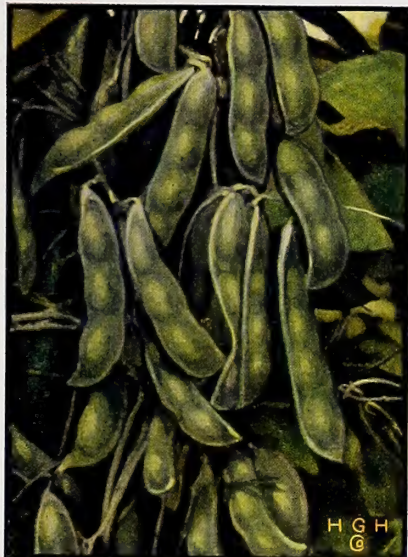
Ten days later than Excelsior Refugee but heavier bearer; resistant to unfavorable weather.

**WHITE MEXICAN OR PROLIFIC TREE BEAN (NO. 28).**

Use as a snap bean or dry as a shell bean. Use dry for "Army" or "Navy" bean.

Prices on Nos. 14, 6, 25, 13, 28, Each;

Packet, 10 cents; ½ pound, 20 cents; pound, 40 cents; 2 pounds, 70 cents; postpaid. Write for special quantity prices.



JACKSON WONDER BUSH LIMA BEAN

### WAX PODDED BUSH BEANS

**WARDWELL'S KIDNEY WAX (NO. 16).** Almost stringless, heavy bearing white or wax podded bean of fine flavor.

**SURE CROP STRINGLESS WAX (NO. 20).** Stringless, prolific, almost round, and finest in eating qualities.

**HASTINGS' EARLY VALENTINE WAX (NO. 24).** First class for home use or nearby markets; round and fleshy.

**PROLIFIC BLACK WAX (NO. 32).** Extra prolific strain of the old favorite German Black Wax.

**RUST-PROOF GOLDEN WAX (NO. 30).** Rust-proof to a remarkable degree. Very fine.

Prices on Nos. 16, 20, 24, 32, 30: Packet, 10 cents; ½ lb., 25 cents; pound, 45 cents; 2 lbs., 80 cents; postpaid.



HASTINGS' EXCELSIOR EXTRA EARLY REFUGEE BEAN

**POLE BEANS**

**McCASLAN POLE BEAN (NO. 26).** The superb pole bean, white seeded, green podded, and the best of all pole beans ever introduced. Fine for snap or shelled beans. See illustrations on left and on front cover.

Price: Packet, 15 cents; ½ lb., 30 cents; lb., 50 cents; 2 lbs., 90 cents.

**HASTINGS' GENUINE CORNFIELD (NO. 18).** The real old cornfield bean. Grows well in shade of corn; prolific and tender, and a well-flavored bean.

**HASTINGS' WHITE CORNFIELD (NO. 35).** Fully as good as the Genuine Cornfield with the added qualities of a white bean.

**GEORGIAN POLE BEAN (NO. 36).** Equally good for planting in corn or as regular pole bean. Holds up in extreme heat and drought, with medium sized, meaty, practically stringless pods of finest quality and flavor.

**KENTUCKY WONDER WAX (NO. 5).** Pods long, very thick and meaty, stringless and of bright yellow color. Wax podded form of the famous Kentucky Wonder Pole Bean.

Prices on Nos. 18, 35, 36, 5: Packet, 10 cents; ½ lb., 25 cents; lb., 45 cents; 2 lbs., 80 cents; postpaid.

**OLD HOMESTEAD, KENTUCKY WONDER, TEXAS PROLIFIC (NO. 15).** Second only to McCaslan; the Southern standard; for years the most popular pole bean in existence.

Price: Packet, 10 cents; ½ lb., 20 cents; lb., 35 cents; 2 lbs., 65 cents.

**LIMA or BUTTER BEANS**

**JACKSON WONDER BUSH LIMA (NO. 17).** See illustration on Page 3. Small, tender; the most prolific of all bush limas.

Price: Packet, 10 cents; ½ lb., 20 cents; pound, 35 cents; 2 lbs., 65 cents.

**FORDHOOK BUSH LIMA (NO. 33).** Best of large seeded bush limas; seeds very large.

**BURPEE IMP. BUSH LIMA (NO. 34).** Bears heavy crops of large beans late in season.

Prices on Nos. 33, 34: Packet, 10 cents; ½ lb., 25 cents; pound, 45 cents; 2 lbs., 80 cents.

**HENDERSON BUSH LIMA (NO. 7).** Smallest and most prolific of all white seeded varieties; a wonderful bean.

**FLORIDA BUTTER (No. 27).** The only true pole lima bean sure to set pods from the earliest beans; fine buttery flavor.

**SMALL WHITE LIMA (NO. 9) and LARGE WHITE LIMA (NO. 10).** Very popular, heavy bearing pole limas and delicious beans.

Prices on Nos. 7, 27, 9, 10: Packet 10 cents; ½ lb., 20 cents; lb., 40 cents; 2 lbs., 70 cents.

**BEETS**

Plant 1 ounce to 50 feet of row.

**HASTINGS' IMP. BLOOD TURNIP BEET (NO. 45).** Most popular variety for home use and nearby markets. Sweet, tender, free from stringiness, very productive. See illustration on front cover.

**HASTINGS' ECLIPSE BLOOD TURNIP BEET (NO. 40).** See illustration on left. The most popular market gardeners' beet for the South as well as a favorite for home gardens.

**HASTINGS' CRIMSON KING (NO. 46).** Turnip shaped, very uniform, sweet and tender; a splendid all-season beet.

**LONG SMOOTH BLOOD (NO. 49).** Drought and heat resisting, with long, smooth blood red roots, lasting after others are gone.

Prices on Nos. 45, 40, 46, 49: Packet, 5 cents; oz., 10 cents; ¼ lb., 35 cents; lb., \$1.25.

**LENTZ EXTRA EARLY TURNIP BEET (NO. 50).** Market gardeners' favorite. Light red zoned with pink; tender and sweet at all stages.

**SWISS CHARD BEET OR SEA KALE (NO. 43).** For "greens" only; a delicious flavor not found in turnips or kale.

Prices on Nos. 50, 43: Packet, 5 cents; oz., 15 cents; ¼ lb., 50 cents; lb., \$1.50.

**EXTRA EARLY EGYPTIAN (NO. 42).** A quick grower of smooth, turnip-shaped roots of delicious flavor when young.

**HALF LONG BLOOD BEET (NO. 44).** Favorite for late use, sweet and tender. Holds up long after maturing.

Prices on Nos. 42, 44: Packet, 5 cents; oz., 10 cents; ¼ lb., 30 cents; lb., \$1.00.

**JUMBO LONG RED MANGEL (NO. 41).** Largest and heaviest yielder in the South for all true Mangel Beets for stock.

**WHITE FRENCH HALF-SUGAR MANGEL (NO. 51).** Not quite as heavy yielder as Jumbo but higher sugar content.

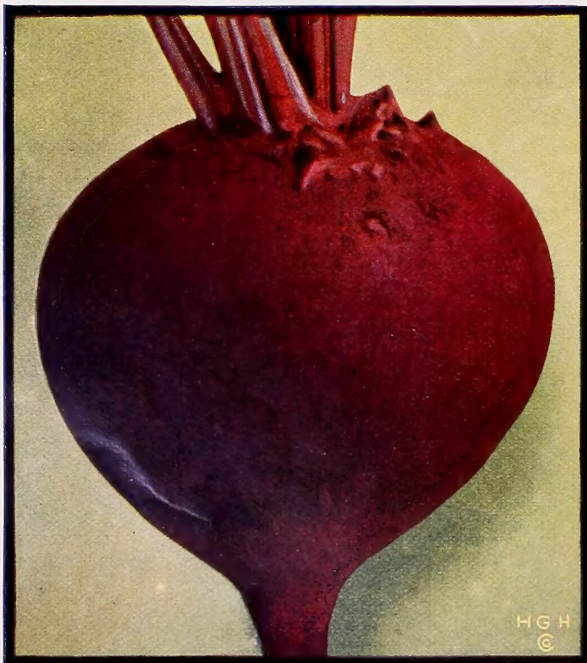
Prices on Nos. 41, 51: Oz., 10 cents; ¼ lb., 25 cents; lb., 75 cents.



McCASLAN POLE BEANS



HASTINGS' STRINGLESS GREEN POD BUSH BEANS



HASTINGS' ECLIPSE BLOOD TURNIP BEET

## HASTINGS' CABBAGE

**HASTINGS' FAMOUS LONG ISLAND WAKEFIELD CABBAGE (NO. 105).** Largest, earliest and surest header of all Wakefield or pointed varieties. The right variety for shipment and splendid first early for home use.

**HASTINGS' SELECTED EARLY JERSEY WAKEFIELD (NO. 106).** Similar to above though more pointed, and always very popular for a first early cabbage.

**EARLY WINNINGSTADT (NO. 104).** An old favorite, extra early, very pointed cabbage for home garden use only.

**PERFECTION DRUMHEAD SAVOY (NO. 103).** Most tender and finest flavored cabbage. Does not do well in hot weather.

Prices on Nos. 105, 106, 104, 103: Packet, 10 cents; ½ oz., 20 cents; oz., 35 cents; ¼ lb., \$1.25; lb., \$4.00.

**HASTINGS' GENUINE SUREHEAD (NO. 120).** The most popular variety for main crop. Strong, vigorous grower; very uniform in size, shape and color.

**CENTENNIAL LATE FLAT DUTCH (NO. 110).** The best main crop, heavy producing strain of late flat Dutch cabbages. Very large, vigorous and resistant to heat and cold.

**HASTINGS' SURE CROP (NO. 101).** Our favorite medium early cabbage. Earliest of all the large, round, flat varieties; crisp and tender.

**ALL-HEAD EARLY (NO. 121).** Very firm solid heads with few outer leaves.

**EARLY SUMMER (NO. 122).** Uniform in size and shape; flattened and solid.

**SUCCESSION (NO. 116).** Good second-early, reliable heading, general purpose cabbage.

**STEIN'S EARLY FLAT DUTCH (NO. 125).** A fine medium early flat cabbage to use between the earliest and the late cabbages to prolong the season.

**PE TSAI OR CHINESE CABBAGE (NO. 126).** Also called Celery Cabbage. Extremely popular for salads and to cut up like cabbage for cold slaw. Should be banked up so as to blanch the sweet, tender, crisp leaves for best results.

Prices on Nos. 120, 110, 101, 121, 122, 116, 125, 126: Packet, 10 cents; ½ oz., 20 cents; oz., 35 cents; ¼ lb., \$1.00; lb., \$3.50; postpaid.

### Big 4 Cabbage Collection—25c

Four varieties: **LONG ISLAND WAKEFIELD, HASTINGS' GENUINE SUREHEAD, HASTINGS' SURE CROP** and **CENTENNIAL LATE FLAT DUTCH**, combine four of the best varieties grown and will give you an all-season supply of cabbage; early, medium and late. They are first-class for early spring planting, and equally good for summer and early fall plantings. This is a big bargain offer, 40 cents' worth for 25 cents, postpaid, and we expect 25,000 to 30,000 of our customers to take full advantage of this valuable collection this spring.

## COLLARDS

The old time standby for greens all over the South. One ounce of seed plants 200 feet of row.

**SOUTHERN OR GEORGIA COLLARD (NO. 135).** Stands all sorts of adverse conditions, and will make a good crop on soil too poor to grow cabbage. This is the Southern standard variety.

Price: Packet, 5 cents; oz., 10 cents; ¼ lb., 25 cents; lb., 75 cents.



SOUTHERN OR GEORGIA COLLARD (NO. 135)



HASTINGS' FAMOUS LONG ISLAND WAKEFIELD CABBAGE (NO. 105)

## BRUSSELS SPROUTS

The sprouts are miniature cabbages, growing closely on the stalk of plant. Quite hardy; live through winter in lower South.

**IMPROVED DWARF BRUSSELS SPROUTS (NO. 59).** Most desirable variety for the South.

Price: Packet, 10 cents; oz., 35 cents; ¼ lb., \$1.25; lb., \$4.00.

## CRESS

**WATER CRESS (NO. 133).** Grown easily in shallow fresh water. Makes fine salads and garnishing.

Price: Packet, 10 cents; oz., 40 cents.

**EXTRA CURLED CRESS (IMP. PEPPER GRASS), (NO. 132).** Tastes same as water cress and easily grown anywhere.

Price: Packet, 5 cents; oz., 10 cents; ¼ lb., 25 cents.

## ENDIVE

**EARLY GREEN CURLED (NO. 193).** Standard variety; excellent flavor; finest for salads.

Price: Packet, 5 cents; oz., 15 cents; ¼ lb., 50 cents; postpaid.



HASTINGS' GENUINE SUREHEAD CABBAGE (NO. 120)



HASTINGS' GILT EDGE CAULIFLOWER

### CAULIFLOWER

**GILT EDGE (NO. 85).** Largest, most perfect and surest header of all the early varieties, and in quantity it is unexcelled. Similar to Snowball but surer header.

Price: Packet, 25 cents; ¼ oz., 85 cents; ½ oz., \$1.50; oz., \$2.75.

### EGGPLANTS

**HASTINGS' IMPROVED LARGE PURPLE THORNLESS (NO. 190).** See illustration. Standard for all parts of the South for home use or shipment.

**FLORIDA HIGH BUSH (NO. 189).** For home use and nearby markets; "eggs" grow higher off ground; less subject to rot.

Prices on Nos. 190, 189: Packet, 10 cents; ½ oz., 20 cents; oz., 35 cents; ¼ lb., \$1.25; lb., \$4.00.



IMPROVED LARGE PURPLE THORNLESS EGGPLANT

### CELERY

**GOLDEN SELF-BLANCHING (NO. 77).** Easiest and quickest celery to blanch and finest variety you can plant; nearly stringless, short, stocky, tender and brittle. French originator's true stock—the finest celery.

Price: Packet, 10 cents; ½ oz., 60 cents; oz., \$1.00; ¼ lb., \$3.00.

**WHITE PLUME (NO. 76), SAVANNAH MARKET (NO. 78), GIANT PASCAL (NO. 79), MEXICAN SOLID (NO. 80).** Well known standard varieties for general planting.

Price each: Packet, 10 cents; oz., 15 cents; ¼ lb., 50 cents; lb., \$1.50.

**CELERICAC (NO. 75).** Turnip-rooted celery for flavoring.

Price: Packet, 5 cents; oz., 15 cents; ¼ lb., 50 cents.

### CARROTS

One ounce for 10 feet of row.

**CHANTENAY (NO. 65).** See illustration. A stump-rooted variety, the best of its class; unexcelled in quality and productiveness.

**OXHEART (NO. 66).** The best of the short-rooted, thick-formed carrots. Easily grown and entirely satisfactory for home garden or market.

**DANVER'S INTERMEDIATE (NO. 68).** Heaviest producer of the half long varieties.

**IMPROVED LONG ORANGE (NO. 69).** Heaviest cropping table carrot; rich orange color.

Prices on Nos. 65, 66, 68, 69: Packet, 5 cents; oz., 10 cents; ¼ lb., 35 cents; lb., \$1.25.

**RED ST. VALERY (NO. 67).** Roots smooth and regular, of large size.

**HALF LONG SCARLET (NO. 71).** A favorite stump-rooted sort; very good.

Prices on Nos. 67, 71: Packet, 5 cents; oz., 10 cents; ¼ lb., 30 cents; lb., \$1.00.

**LARGE WHITE BELGIAN (NO. 70).** For stock feed only. An immense cropper.

Price: Packet, 5 cents; oz., 10 cents; ¼ lb., 25 cents; lb., 75 cents.



CHANTENAY CARROT

### CUCUMBERS

**WHITE SPINE (NO. 180).** Finest extra dark strain; remains fresh, crisp and tender.

**KLONDIKE (NO. 184), EARLY FORTUNE (NO. 175), EARLY FRAME (NO. 182).** Favorites wherever grown and first two hold their color and quality after being picked. Frame is for home gardens.

Prices on Nos. 180, 184, 175, 182: Packet, 5 cents; oz., 10 cents; ¼ lb., 30 cents; lb., \$1.00.

**DAVIS PERFECT (NO. 179), IMPROVED LONG GREEN (NO. 181), EVERBEARING (NO. 186), CHICAGO PICKLE (NO. 183), EARLY GREEN CLUSTER (NO. 178).** These are all standard varieties throughout the South. You will not make a mistake in planting any of them for home garden use.

Prices on Nos. 179, 181, 186, 183, 178: Packet, 5 cents; oz., 10 cents; ¼ lb., 35 cents; lb., \$1.25.

**GIANT PERA (NO. 176), JAPANESE CLIMBING (NO. 185).** Pera is largest of all cucumbers, and Japanese Climbing is a very prolific climbing variety.

Prices on Nos. 176, 185: Packet, 10 cents; oz., 15 cents; ¼ lb., 50 cents; lb., \$1.50.

**LEMON CUCUMBER (NO. 174).** A very prolific lemon-shaped sort.

**GHERKINS (NO. 187).** For pickling only.

Prices each: Packet, 10 cents; oz., 20 cents; ¼ lb., 65 cents; lb., \$2.00.



WHITE SPINE CUCUMBER





HASTINGS' EDEN GEM CANTALOUPE

## CANTALOUPE

**HASTINGS' EDEN GEM (NO. 231).** The best all-round cantaloupe in existence, valuable alike for home or market use.

**HASTINGS' SALMON FLESH EDEN GEM (NO. 243).** Similar to above; best of the "pink meats." Also known as Hastings' Pink Meat.

**BURRELL GEM (NO. 241).** Also known as Pink Meated Rocky Ford; orange-yellow color, firm and solid.

**TEXAS CANNONBALL (NO. 232).** Almost all "meat"; medium sized and round. Closely netted, insect and sun resistant.

**NIXON (NO. 242).** Size extra large; the real Georgia cantaloupe. Fine big cantaloupe for home use and nearby markets.

**BANANA (NO. 233).** Banana-like shape and flavor. Not merely a curiosity; but a finely flavored, orange flesh colored variety.

Prices on Nos. 231, 243, 241, 232, 242, 233: Packet, 10 cents; oz., 20 cents; ¼ lb., 50c; lb., \$1.75; postpaid.

**ROCKY FORD (NO. 237).** Well netted, good size, thick green flesh and of delicious flavor. This variety made Rocky Ford, Colorado, famous.

**MONTREAL MARKET (NO. 240).** One of the largest, finest flavored and spiciest of cantaloupes. Its superior quality surely pays for careful cultivation.

**EARLY HACKENSACK (NO. 230).** For home use; too large for shipping.

**EARLY NETTED GEM (NO. 236).** Globe shaped; otherwise like Rocky Ford.

**PONCE DE LEON (NO. 238).** Nearly like old fashioned musk-melon. Large size; second early melon for home gardens.

Prices on Nos. 237, 240, 230, 236, 238: Packet, 5 cents; oz., 15 cents; ¼ lb., 35 cents; lb., \$1.25.

## GOURDS

**NEST EGG (NO. 197).** Small white fruited variety resembling and used for nest eggs. Don't plant in very rich soil.

**SUGAR TROUGH (NO. 195).** Very large; used for buckets, baskets, etc.

**THE DIPPER (NO. 198).** The variety for long handled dippers.

**THE DISHCLOTH (NO. 196).** Remove skin when ripe; clean for spongelike dishcloths.

Prices: 10 cents a packet; one packet of each for 25 cents.

## KALE

**EARLY GREEN CURLED KALE OR BORECOLE (NO. 200).** More hardy than cabbage and will stand through the entire winter of Central and Lower South. Rather low growing with tender curled leaves; very delicate in flavor.

Prices: Packet, 10 cents; oz., 15 cents; ¼ lb., 35 cents; lb., \$1.25.

**TALL GREEN CURLED KALE (NO. 201).** A famous variety for "greens" during winter and spring.

Price: Packets, 10 cents each.

## KOHL-RABI

**EARLY WHITE VIENNA (NO. 202).** Buds are of very mild, delicate, cabbage-like flavor; most delicious. They are hardy, grow to size of an apple and are of a pale, whitish-green color.

Prices: Packet, 10 cents; oz., 30 cents; ¼ lb., 90 cents; lb., \$3.00.



HASTINGS' BIG BOSTON LETTUCE

## LETTUCE

**BIG BOSTON (NO. 210).** Purest and hardest heading stock grown; used exclusively in many sections for market and home use.

**FLORIDA HEADER (NO. 215).** Very resistant to weather extremes; large solid heads that are slow to run to seed.

Prices on Nos. 210 and 215: Packet, 5 cents; oz., 15 cents; ¼ lb., 40 cents; lb., \$1.25.

**HASTINGS' ICEBERG (NO. 216).** A real crisp-leaved hard header; very crisp, tender and beautiful. See illustration below.

**DRUMHEAD WHITE CABBAGE LETTUCE (NO. 211).** Superb for a large, crisp-leaved, home garden variety.

**CALIFORNIA CREAM BUTTER (NO. 220).** Good for open ground planting at all seasons in the Southland and does well.

**DIXIE HARDHEAD (NO. 221).** Heads large and very solid.

Prices on Nos. 216, 211, 220, 221: Packet, 5 cents; oz., 20 cents; ¼ lb., 65 cents; lb., \$2.00; postpaid.

**MAY KING (NO. 225).** Standard and very popular.

**SUPERBA (NO. 212).** The biggest lettuce of all; for home use.

**ALL YEAR ROUND (NO. 224), PRIZEHEAD (NO. 219), IMPROVED HANSON (NO. 222), BLACK SEEDED SIMPSON (NO. 223), BROWN DUTCH (NO. 213), GRAND RAPIDS (NO. 214)**—All mighty well known varieties of lettuce.

Prices on Nos. 225, 212, 224, 219, 222, 223, 213, 214: Packet, 5 cents; oz., 15 cents; ¼ lb., 50 cents; lb., \$1.50.

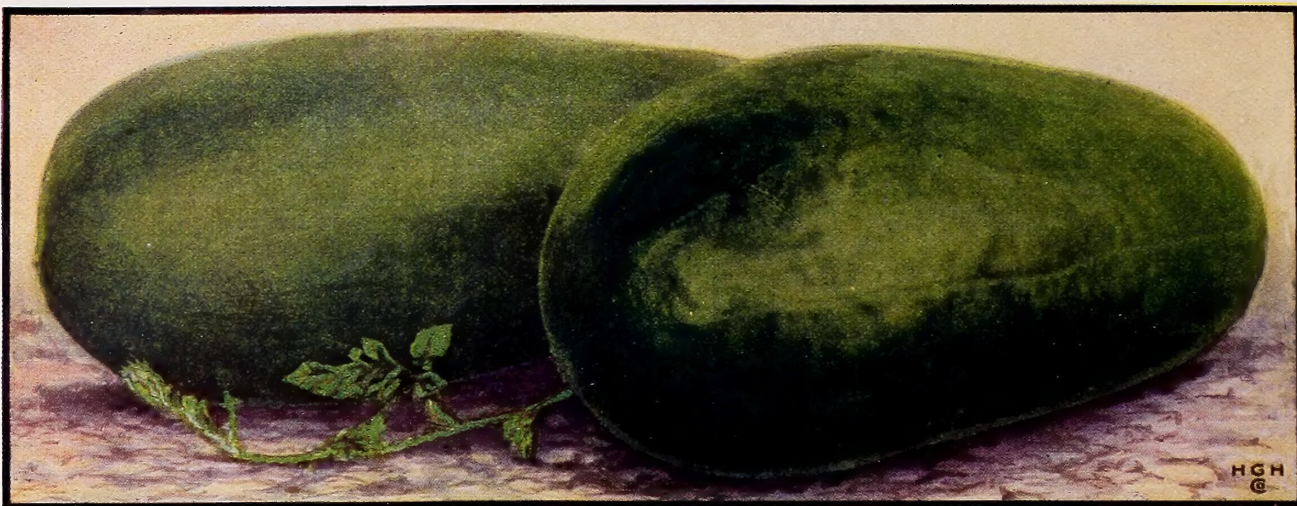
**WHITE PARIS COS (NO. 217).** This is true Romaine, the celery lettuce.

Prices: Packet, 5 cents; oz., 15 cents; ¼ lb., 50 cents; lb., \$1.50.



HASTINGS' ICEBERG LETTUCE

## HASTINGS' SOUTHERN GROWN WATERMELON SEED



THE WATSON OR TOM WATSON WATERMELON—THE STANDARD WATERMELON FOR HOME USE, NEARBY MARKETS AND SHIPPING

**WATSON OR TOM WATSON (NO. 258).** Seed grown from the original stock, which we have kept pure, and not the "run-out" seed generally sold. It's good at all times and for all purposes; the greatest selling melon there is. Whether you want a shipping melon or one for home use you will find Watson a wonderful melon.

**KLECKLEY SWEET (NO. 253).** See front cover illustration of this most popular melon for home use and nearby markets. Its eating qualities leave nothing to be desired. Skin dark green, flesh extra sweet and of brightest rich scarlet, ripening right up to the very thin rind. You can't look at a cool Kleckley without it "making your mouth water."

**HASTINGS' AUGUSTA RATTLESNAKE (NO. 252).** This melon made Georgia famous as the finest melon-growing State. See the characteristic illustration below. It is the best second early melon.

**HALBERT HONEY—SWEETEST OF ALL WATERMELONS (NO. 255).** The sweetest of all melons and its delicious crimson red flesh extends nearly to the skin, the rind being very thin and brittle. It is early, prolific and large.

**HASTINGS' TINKER (NO. 265).** A perfectly distinct medium-sized melon for home use. A white seeded, red fleshed melon with a distinct honey like flavor not found in other melons.

Prices on Nos. 258, 253, 252, 255, 265: Packet, 10 cents; oz., 15 cents;  $\frac{1}{4}$  lb., 40 cents; lb., \$1.25.



A GOOD, SWEET, JUICY OLD-TIME AUGUSTA RATTLESNAKE WATERMELON GROWN FROM HASTINGS' SEED

**IRISH GRAY (NO. 256).** It's a combination melon equally good for shipping or home use, being equal to or better than the Watson in this respect. It's sweet, the flesh is red, crisp and free from stringiness and in color of skin a mottled greenish gray, entirely distinct.

Prices: Packet, 10 cents; oz., 20 cents;  $\frac{1}{4}$  lb., 50 cents; lb., \$1.50.

**FLORIDA FAVORITE (NO. 259).** Hastings' Selected Seed of Florida Favorite has given us an unsurpassed extra early, good quality, medium-sized melon, just the kind for early home use and nearby markets. Rind of medium thickness and rather tough. Flesh red, very crisp, tender and juicy. Beautifully shaped melon of dark green color, irregularly striped.

**ALABAMA SWEET (NO. 264).** The great Southwestern melon. Early, bright scarlet flesh, fine grained, solid, sweet and free from stringiness. Resembles Florida Favorite and very popular in Texas and throughout the Southwest for home use, market and for shipping.

**JONES OR PHILIP JONES (NO. 260).** Almost round and always lies on blossom end while growing. Large to extra large and fine eating qualities wherever grown.

**GREEN GIANT CITRON (FLA. STOCK MELON), (NO. 268).** This is the melon for sweet pickles. Surplus can be fed to hogs and cattle, but don't plant close to watermelons for they will cross and ruin the watermelons.

Prices on Nos. 259, 264, 260, 268: Packet, 5 cents; oz., 10 cents;  $\frac{1}{4}$  lb., 30 cents; lb., \$1.00.



HASTINGS' PRIZETAKER ONION



HASTINGS' WHITE OR YELLOW BERMUDA ONIONS—BEST ON EARTH

### GARDEN PEAS

HOME DELIGHT (NO. 328). See illustration. BLISS EVERBEARING (NO. 329), EXTRA EARLY SURPRISE (NO. 315), MARKET SURPRISE (NO. 322), LITTLE MARVEL (NO. 314), NOTT'S EXCELSIOR (NO. 319), GRADUS OR PROSPERITY (NO. 330), THOMAS LAXTON (NO. 323). We haven't space to describe these varieties. They are extra early peas except 328, 329 and 314, which are second earlies and very heavy bearers.

Prices on the above varieties: Each, packet, 10 cents; ½ lb., 25 cents; lb., 45 cents; 2 lbs., 75 cents.

ALASKA EXTRA EARLY (NO. 317), HASTINGS' JOHN L. (NO. 316), BLACK-EYE MARROWFAT (NO. 320), WHITE-EYE MARROWFAT (NO. 321), PREMIUM GEM (NO. 331). Nos. 317 and 316 are first-early peas, the finest grown and you can

make no mistake with them. No. 331 is a good early pea. The Marrowfats should be "brushed" for prolific bearers. Plant successive sowings to lengthen season.

Prices on Nos. 317, 316, 320, 321, 331: Packet, 10 cents; ½ lb., 20 cents; lb., 40c; 2 lbs., 70 cents; postpaid.

### ONIONS

HASTINGS' PRIZETAKER (NO. 296). See illustration. WHITE OR YELLOW BERMUDA (NO. 288). See illustration. RED BERMUDA (NO. 287).

Prices on Nos. 296, 288, 287: Packet, 10 cents; ½ oz., 15 cents; oz., 25 cents; ¼ lb., 90 cents; lb., \$3.00.

LARGE RED WETHERSFIELD (NO. 285), EXTRA EARLY RED (NO. 286). Same prices as above except packets, 5 cents each.

HASTINGS' YELLOW GLOBE (NO. 293), YELLOW GLOBE DANVERS (NO. 294), GIANT WHITE TRIPOLI (NO. 290).

Prices each: Packet, 10 cents; ½ oz., 20 cents; oz., 35 cents; ¼ lb., \$1.00; lb., \$3.50.

HASTINGS' WHITE GLOBE (NO. 292), SILVERSKIN (NO. 300). Prices, each: Packet, 10 cents; ½ oz., 20 cents; oz., 35 cents; ¼ lb., \$1.25; lb., \$4.00.

AUSTRALIAN BROWN (NO. 297). The longest keeper of all onions. Prices: Packet, 5 cents; oz., 20 cents; ¼ lb., 75 cents; lb., \$2.50.

### PEPPERS

ROYAL KING (NO. 357), RUBY GIANT (NO. 359), RUBY KING (NO. 352). The three greatest sweet peppers grown.

Each: Packet, 10 cents; ½ oz., 20 cents; oz., 35 cents; ¼ lb., \$1.25; lb., \$4.00.

LARGE BELL OR BULL NOSE (NO. 356), PIMIENTO (NO. 358).

Each: Packet (356), 5 cents; packet (358), 10 cents; each, ½ oz., 20 cents; oz., 35c; ¼ lb., \$1.00; lb., \$3.50.

GOLDEN PRIZE (NO. 350), RED CHILI-HOT PEPPER (NO. 354) AND HASTINGS' MIXED PEPPERS, NO. 351. A mixture of all kinds catalogued by us.

Prices, each: Packet, 10 cents; 3 for 25c.

Our Georgia grown pepper seed is suited to the South.



HASTINGS' HOME DELIGHT PEAS—HEAVY BEARING



HASTINGS' NEW ROYAL KING PEPPER



HASTINGS' WHITE VELVET OKRA

## MUSTARD FOR SPRING SALAD

**GIANT SOUTHERN CURLED (NO. 278).** See illustration. The very best of the finely curled leaf strains; slightly pungent, crisp and tender. Can be eaten like lettuce or boiled for "greens." Also known as "Ostrich Plume."

**CHINESE MUSTARD (NO. 277).** Resembles Southern Curled, but quicker grower, insuring tenderness, mildness and freedom from bitter taste.

**WHITE MUSTARD (NO. 279).** Seeds of this variety are used for pickling and seeds ground up compose what is known as "mustard" in the stores.

Prices on Nos. 278, 277, 279: Packet, 5 cents; oz., 10 cents; ¼ lb., 30 cents; lb., \$1.00.

## HASTINGS' OKRA — Georgia Grown

**HASTINGS' WHITE VELVET OKRA (NO. 305).** Standard variety throughout the South for garden and local shipment. See illustration. Early, round, white pods free from ridges and not prickly to touch.

**PERKINS' MAMMOTH LONG PODDED OKRA (NO. 306).** By far the best green podded okra, especially for market gardeners and for shipment.

Prices on Nos. 305, 306: Packet, 5 cents; oz., 10 cents; ¼ lb., 25 cents; lb., 75 cents; postpaid.

## SPINACH — PARSLEY — PARSNIPS — SALSIFY

**HASTINGS' ARAGON SPINACH (NO. 411).** Very best variety for the South with large, thick, green leaf, well savored and doesn't readily run to seed.

**BLOOMSDALE SPINACH (NO. 412), LONG STANDING (NO. 413), BROAD LEAF FLANDERS SPINACH (NO. 414).** Well known varieties and all good.

Prices on Nos. 411, 412, 413, 414: Packet, 5 cents; oz., 10 cents; ¼ lb., 25 cents; lb., 75 cents.

**NEW ZEALAND SPINACH (NO. 416).** An all summer variety growing luxuriantly in hottest weather.

Prices: Packet, 10 cents; oz., 20 cents; ¼ lb., 50 cents; lb., \$1.75.

**MOSS CURLED PARSLEY (NO. 308).** Most ornamental of all varieties and a favorite for garnishing. **DOUBLE CURLED PARSLEY (NO. 309), PLAIN LEAVED PARSLEY (NO. 310).**

Each: Packet, 10 cents; oz., 15 cents; ¼ lb., 35 cents; lb., \$1.00.

**IMPROVED HOLLOW CROWN PARSNIPS (NO. 311).** Rich, very sweet, immensely productive. The best all-around variety.

Prices: Packet, 10 cents; oz., 15 cents; ¼ lb., 35 cents; lb., \$1.00.

**SALSIFY, MAMMOTH SANDWICH ISLAND (NO. 404).** Best white variety.

Prices: Packet, 10 cents; oz., 25 cents; ¼ lb., 90 cents; lb., \$3.00.

## PUMPKINS

**HASTINGS' BIG JUMBO (NO. 363).** The largest kind; see illustration from 220-lb. Jumbo Pumpkin below. **IMPROVED GREEN STRIPED CASHAW (NO. 365), JAPANESE PIE PUMPKIN (NO. 366).** Each the best of its type.

Prices, each: Packet, 10 cents; oz., 20 cents; ¼ lb., 50 cents; lb., \$1.75.

**TENNESSEE SWEET POTATO PUMPKIN (NO. 361), SUGAR OR SWEET PUMPKIN (NO. 364).**

Prices, each: Packet, 10 cents; oz., 15 cents; ¼ lb., 45 cents; lb., \$1.50.

**SOUTHERN FIELD (NO. 360) and LARGE CHEESE PUMPKIN (NO. 362).**

Prices, each: Packet, 5 cents; oz., 10 cents; ¼ lb., 30 cents; lb., \$1.00.

**LEEKS, LARGE CARENTEN (NO. 203).**

Prices: Packet, 10 cents; oz., 15 cents; ¼ lb., 25 cents; lb., 75 cents.



GIANT SOUTHERN CURLED MUSTARD



HASTINGS' BIG JUMBO PUMPKIN—BIGGEST OF ALL



HASTINGS' ARAGON SPINACH—FOR "GREENS"

## RADISH—SQUASH

**ROSY GEM RADISH (NO. 375).** See illustration below. Very tender and crisp, never becoming pithy until very old.  
**EARLY LONG SCARLET (NO. 376).** Tops small, roots long and tapering, intense bright scarlet color and a very popular radish.  
**CHARTIER (NO. 373), HASTINGS' NEW GLASS (NO. 383), WHITE STRASBURG (NO. 385), LONG WHITE VIENNA (NO. 388).**  
**FRENCH BREAKFAST (NO. 389).** All well known standard varieties.

Prices on all radishes above, each: Packet, 5 cents; oz., 10 cents; ¼ lb., 30 cents; lb., \$1.00.  
**SCARLET BUTTON (NO. 381).** Similar to illustration below. **LONG WHITE ICICLE (NO. 382), EARLIEST CARMINE (NO. 374), CRIMSON GIANT (NO. 378), HALF LONG DEEP SCARLET (NO. 384), HASTINGS' MIXED RADISHES (all kinds) (NO. 387), CALIFORNIA MAMMOTH WINTER RADISH (NO. 390), BLACK SPANISH WINTER (NO. 386) and CHINA ROSE WINTER RADISH (NO. 377).** The finest radishes in the world.

Prices, each: Packet, 5 cents; oz., 10 cents; ¼ lb., 35 cents; lb., \$1.25.  
**SQUASH—YELLOW SUMMER CROOKNECK (NO. 421).** See illustration. **HASTINGS' EARLY WHITE BUSH or PATTY PAN (NO. 425).** The fine flat white scalloped squash. **MAMMOTH WHITE BUSH (NO. 420), EARLY YELLOW BUSH (NO. 424).** All fine early bush squashes. **BOSTON MARROW (NO. 428), EARLY PROLIFIC MARROW (NO. 423) and IMPROVED HUBBARD (NO. 427)** are the best running or marrow squashes for the South.

Prices, each: Packet, 10 cents; oz., 20 cents; ¼ lb., 50 cents; lb., \$1.50.  
**GIANT SUMMER CROOKNECK (NO. 426).**  
 Prices: Packet, 10 cents; oz., 20 cents; ¼ lb., 65 cents; lb., \$2.00.

## SPRING TURNIPS

**EARLY RED or PURPLE TOP (NO. 466) and EARLY WHITE FLAT DUTCH (NO. 467).** See illustration of this type. Very quick growers with fine grained, sweet flavored flesh.

**WHITE EGG (NO. 476).** Finest flavored of all early turnips.  
**YELLOW AMBER GLOBE (NO. 469).** Undoubtedly the best yellow fleshed variety.  
**EARLY SNOWBALL (NO. 472).** Flesh snowy white, crisp and tender.  
**SOUTHERN SNOW-WHITE GLOBE (NO. 471).** Large, round, solid, very productive.  
**GOLDEN BALL (NO. 474).** Medium size, finest flavored yellow for table use.

Prices on above, each: Packet, 5 cents; oz., 10 cents; ¼ lb., 30 cents; lb., 90 cents.

**PURPLE OR RED TOP GLOBE (NO. 475).** Most popular for general planting.

Prices: Packet, 5 cents; oz., 10 cents; ¼ lb., 35 cents; lb., \$1.25.  
**SEVEN TOP (NO. 477).** Best variety for greens or salad only.  
 Packet, 5 cents; oz., 10 cents; ¼ lb., 25 cents; lb., 75 cents.  
**IMPROVED AMERICAN RUTABAGA (NO. 468).** The finest rutabaga in the world.

**HASTINGS' MIXED TURNIPS (NO. 479).** All varieties mixed.  
 Each: Packet, 5 cents; oz., 10 cents; ¼ lb., 30 cents; lb., \$1.00.  
**HASTINGS' BIG 7 TURNIP COLLECTION—7 ounces, 7 varieties.**  
 50 cents, postpaid—Our 7 best varieties.

## TOMATOES

**HASTINGS' REDFIELD BEAUTY (NO. 445).** The most satisfactory tomato that you can grow for all purposes; combining every desirable quality.

**LIVINGSTON'S GLOBE (NO. 446), HASTINGS' DWARF CHAMPION (NO. 452) and HASTINGS' RED ROCK (NO. 455).**

Each: Packet, 10 cents; ½ oz., 20 cents; oz., 35 cents; ¼ lb., \$1.00; lb., \$3.50.

**PONDEROSA (NO. 443), HASTINGS' EXTRA EARLY PROLIFIC (NO. 444), JUNE PINK (NO. 460) and DUKE OF YORK, the Blight Proof (NO. 456).**

Each: Packet, 10 cents; ½ oz., 25 cents; oz., 40 cents; ¼ lb., \$1.25; lb., \$4.50.

**HASTINGS' IMP. PURPLE ACME (NO. 441), LIVINGSTON'S FAVORITE (NO. 442), THE STONE (NO. 449), SPARK'S EARLIANA (NO. 457), EARLY DETROIT (NO. 459).**

Each: Packet, 5 cents; other prices below.

**HASTINGS' MATCHLESS (NO. 447), HASTINGS' LONG KEEPER (NO. 448), CHALK'S EARLY JEWEL (NO. 451).**

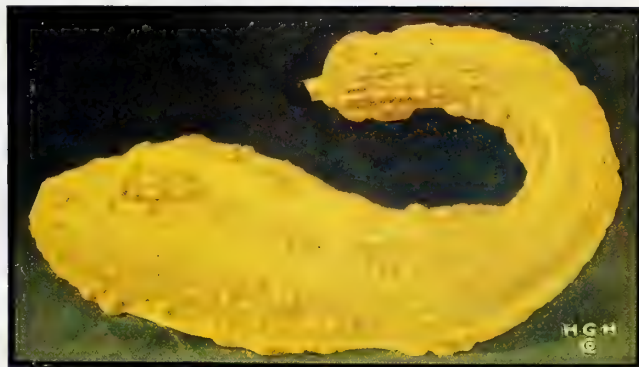
Each: Packet, 10 cents; ½ oz., 15 cents; oz., 25 cents; ¼ lb., 90 cents; lb., \$3.00.

**YELLOW PEAR (NO. 450), YELLOW PLUM (NO. 461), RED PEAR (NO. 454), GOLDEN QUEEN (NO. 453), MANSFIELD TREE (NO. 458).**

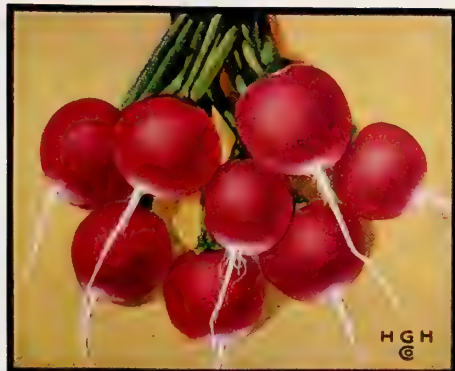
Each: Packet, 10 cents.



EARLY RED OR PURPLE TOP TURNIP



HASTINGS' YELLOW SUMMER CROOKNECK SQUASH



HASTINGS' ROSY GEM RADISH



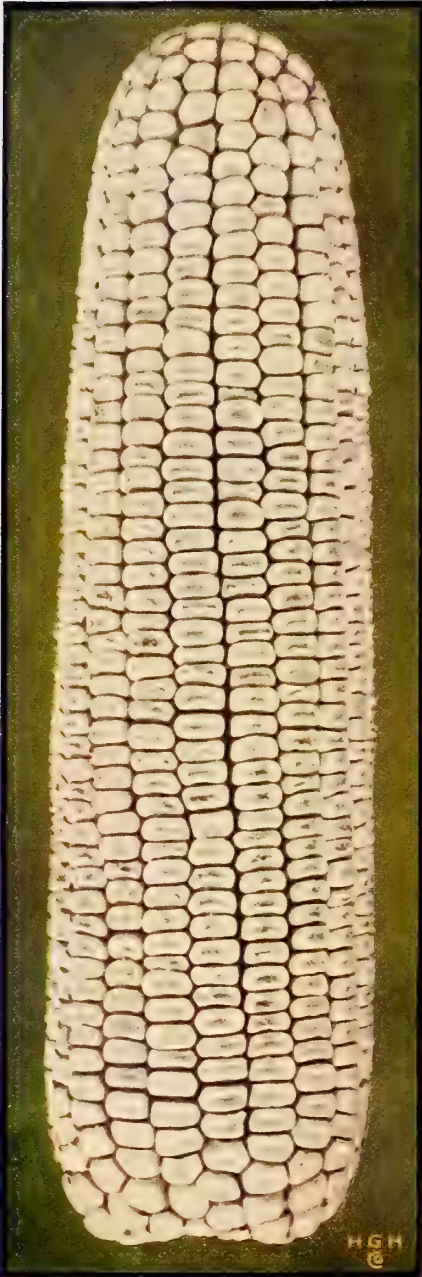
HASTINGS' REDFIELD BEAUTY TOMATO—THE VERY BEST

**HASTINGS' PROLIFIC CORN**

**HASTINGS' PROLIFIC CORN (NO. 140).** Finest in quality. A wonderful producer of Grain and Forage. The Prize-Winning Corn of the South for you to plant.

The prosperity of the South, so greatly increased during the past few years, has been due to building up lands and producing all the grain needed on all up-to-date farms. Hastings' Prolific is the greatest producer of corn for the South. It will make more per acre than other kinds, and is also very good for "Roasting Ears." This variety has won more "yield" prizes in the South in the last ten years than all others combined.

Packet, 10 cents; lb., 25 cents; 2 lbs., 45 cents.  
Write for special quantity prices.



HASTINGS' PROLIFIC CORN

**SWEET AND ROASTING EAR CORN**

**COUNTRY GENTLEMAN (NO. 152).** Finest quality of mid-season sorts.  
**YEXO SUCAR (NO. 151).** Earliest of large sweet corns and the finest quality of all.  
**GOLDEN BANTAM (NO. 167).** A superb early yellow sweet corn, with a flavor that is individual and unexcelled.  
**BLACK MEXICAN (NO. 156).** Late, dark grained, of finest flavor.  
**POPCORN—MONARCH WHITE RICE (NO. 160).** The best white variety for the South; large pointed grains that pop readily.  
 Prices on above, each: Packet, 10 cents; lb., 35 cents; 2 lbs., 60 cents; postpaid.  
**ADAMS' LARGE EARLY (NO. 154) and ADAMS' EXTRA EARLY (NO. 155).** Give rich ground and good cultivation; make fine and earliest roasting ears.  
 Each: Packet, 10 cents; lb., 30 cents; 2 lbs., 50 cents.

**HASTINGS' BANK ACCOUNT COTTON**

**"BANK ACCOUNT" (NO. 515).** Our earliest extra early, extra prolific cotton. This is a result of fourteen years of close breeding and selection for an extra early prolific type. The illustration, from a photograph below, shows what can be done with this splendid variety and yet have it early enough to make a crop ahead of the boll-weevil. It's an all-purpose cotton, very hardy and vigorous, and the variety you should plant in boll-weevil sections, cold bottom lands, and even in the extreme northern parts of the cotton belt.

It is our honest opinion that "Bank Account" is the best extra early cotton ever offered. It will average 40 per cent lint or better and has been tried and tested in all the boll-weevil States, making good in every one. The whole secret is that it makes a crop before the weevils can destroy it.

Price: Lb., 35 cents; 3 lbs., \$1.00; postpaid. NOT PREPAID: 10 lbs., \$1.25; 30 lbs., \$3.00; 100 lbs., \$9.00. WRITE FOR LARGER QUANTITY PRICES.



HASTINGS' "BANK ACCOUNT" COTTON—BEATS THE BOLL-WEEVIL

## FIELD AND GENERAL CROP SEEDS

Prices given below are in small quantities only and are sent postpaid. At the time this catalog goes to press it is impossible to name definite quantity prices for 1920, because the market prices on field seeds vary almost daily. Many kinds are not even listed in this catalog, so we ask that you write us for special quotations on the kinds and amounts of seeds you wish to buy when you are ready for them. We will give you the very best prices on the very best grade of seeds, the only kind that should be planted, and if you wish, we will tell you just what the freight or express will be on them to your station. Just write us your needs. It will pay you to 'Plant Hastings' Seeds.'

**VELVET BEANS—EXTRA EARLY VELVET BEANS (NO. 605).** The one best variety for the middle and northern section of the Cotton Belt. See illustration.

**OSCEOLA VELVET BEANS (NO. 606).** Most desirable where less vine growth is wanted.

Each: Packet, 10 cents; lb., 25 cents; 2 lbs., 45 cents.  
**SOJA BEANS—MAMMOTH YELLOW SOY OR SOJA BEANS (NO. 600).** Best: the strongest grower and heaviest yielder in the South.

Packet, 10 cents; lb., 25 cents; 2 lbs., 45 cents.  
 Write for quantity prices.

**COWPEAS—LARGE BLACK EYE (NO. 340).** The large black-eyed table pea.

**LADY PEAS (NO. 341).** Small seeded, strong growing and prolific for table use.

Each: Packet, 10 cents; lb., 30 cents; 2 lbs., 50 cents.

**PEANUTS—SPANISH PEANUTS (NO. 581).** The best variety for fattening and crop in the South.

**VALENCIA PEANUTS (NO. 578).** Pods large, close and well filled, with 3 to 4 nuts in each pod. See illustration from photograph.

**NORTH CAROLINA RUNNING (NO. 580).** Best and surest cropper in Central and Lower South.

Prices on No. 578: Lb., 40 cents; 3 lbs., \$1.00. Nos. 581 and 580: Lb., 35 cents; 3 lbs., 85 cents. Write for quantity prices.

**SORGHUM—RED TOP (NO. 583), EARLY ORANGE (NO. 585), EARLY AMBER (NO. 586).** All fine varieties of sorghum for forage purposes. Should not be used for syrup.

**YELLOW MILO—MAIZE (NO. 584).** Great producer of fine forage.

Each: Lb., 25 cents; 5 lbs., \$1.00.

**FETERITA—A SURE DROUGHT BEATER (NO. 588).** Similar to Kaffir Corn, but better. For forage and grain, and certainly resists drought and heat.

Price: Packet, 10 cents; lb., 30 cents. Write for quantity prices.

**GOLDEN MILLET, TENNESSEE GROWN (NO. 618).** Formerly German Millet. A wonderful hay crop. Pound, 30 cents.

**JAPANESE BUCKWHEAT (NO. 615).** Good soil improver; fine for poultry and bees. Pound, 25 cents.

**CHUFAS OR EARTH ALMONDS (NO. 617).** Great for fattening hogs.

Packet, 10 cents; lb., 35 cents.  
**UPLAND RICE (NO. 582).** Will make 20 to 40 bushels per acre. Pound, 30 cents.

**KAFFIR CORN—RED KAFFIR (NO. 627), WHITE KAFFIR (NO. 628).** Very valuable for forage and grain for poultry. Only difference is color of seeds.

Each: Packet, 10 cents; lb., 25 cents; 5 lbs., \$1.00.

**CHICKEN CORN OR SHALLU, WHITE SEEDED (NO. 630).** Very prolific.

Packet, 10 cents; lb., 30 cents; 4 lbs., \$1.00.

**JERUSALEM CORN (NO. 626).** Similar to Kaffir, but more drought resistant.

Packet, 10 cents; lb., 30 cents.  
**BROOM CORN (NO. 625).**

Packet, 10 cents; lb., 25 cents; postpaid.

**TOBACCO—HESTER—FOR SMOKING (NO. 435).** Has size, shape, texture, yellow color, most adaptable.

**YELLOW PRYOR—FOR CHEWING (NO. 436).** Makes, when sun-cured, the best natural chewing tobacco.

Each: Packet, 10 cents; ½ oz., 20 cents; oz., 35 cents; ¼ lb., \$1.00; lb., \$3.50.



EXTRA EARLY VELVET BEANS

## CLOVER AND GRASS

**ALFALFA OR LUCERNE CLOVER (NO. 500).** Highest grade seed, 99 per cent purity or over, strongest Northwest American grown seed on the market.

Pound, 60 cents; postpaid. Write for special quantity prices.

**RED CLOVER (NO. 508).** Equally good for pasture, hay or soil improvement.

Pound, 75 cents.

**WHITE CLOVER (NO. 509).** Fine for lawn or pasture mixtures. Pound, 85 cents; postpaid.



ALFALFA OR LUCERNE CLOVER

**GRASS—KENTUCKY BLUE (NO. 533).** Excellent for lawn and pasture.

Pound, 50 cents.

**ENGLISH RYE (NO. 535).** Quick growing perennial for lawn or pasture.

Pound, 40 cents.

**ITALIAN RYE (NO. 536).** Quickest growing, annual lawn or pasture grass.

Pound, 40 cents.

**SUDAN GRASS (NO. 548).** Just about the very best hay grass in the South. Resembles Johnson Grass, except must be reseeded each year. Plant Sudan this year.

Pound, 40 cents.

**HASTINGS' EVERGREEN LAWN MIXTURE (NO. 549).** The very best combination for a lawn in the South. It makes a very quick show and soon becomes a beautiful velvety lawn, on well prepared soil. Stands summer heat and drought without serious injury, coming out again in fine shape when the rains begin.

Pound, 50 cents; 3 lbs., \$1.40; postpaid.

Write for quantity prices.

**HASTINGS' PERMANENT PASTURE MIXTURE (NO. 551).** See illustration below. A well proportioned mixture of nine grasses—no Bermuda or Johnson Grass. Sow 35 lbs. of this mixture with about 7 lbs. of Red Clover per acre for best results. A permanent pasture mixture for all-year-round grazing.

Pound, 50 cents; 3 lbs., \$1.40.

Write for quantity prices.



HASTINGS' VALENCIA PEANUTS



HASTINGS' PERMANENT PASTURE MIXTURE—THE BEST COMBINATION FOR ALL-YEAR-ROUND GRAZING



HASTINGS' UNEXCELLED SWEET PEAS

## Flower Seeds

In this small space it is impossible to even name our complete flower seed list, so we are taking the leading kinds and varieties. Our general catalog contains all kinds suited to the South and is sent free on request.

AGERATUM, BLUE (NO. 702), WHITE (NO. 703), MIXED (NO. 701).

Price, each: Packet, 5 cents.

ALYSSUM, SWEET (NO. 704), LITTLE GEM (NO. 705).

Price, each: Packet, 5 cents; 1/2 oz., 30 cents.

ASTERS, HASTINGS' UNRIVALED MIXED (NO. 707). See illustration on right.

Price: Packet, 10 cents; 3 pkts., 25 cents.

ANTIRRHINUM (SNAP DRAGON), (NO. 723). Finest mixed colors; most beautiful show flower.

Price: Packet, 10 cents.

BALSAM—Extra Fine Mixed (NO. 734). Old fashioned Touch-me-not or Lady Slipper.

Price: Packet, 10 cents.

COLEUS, HASTINGS' HYBRID (NO. 740). Finest decorative foliage plants for the South.

Price: Packet, 25 cents.

CARNATIONS, Finest Double Mixed Colors (NO. 743). From choicest named varieties.

Price: Packet, 15 cents; 2 pkts., 25 cents.

CANNAS (NO. 748). Large flowering, brilliant blooms; make most attractive beds.

Price: Packet, 10 cents; oz., 25 cents.

CANDYTUFT or IBERIS (NO. 738). All shades and colors for borders and edging.

Price: Packet, 5 cents; oz., 25 cents.

CENTAUREA, BACHELOR'S BUTTON (NO. 756), DUSTY MILLER (NO. 755), SWEET SULTAN (NO. 757). Price, each: Packet, 10 cents.

CHRYSANTHEMUMS (NO. 754). Japanese and Chinese varieties; odd and beautiful blooms.

Price: Packet, 25 cents; 2 pkts., 45 cents.

COSMOS, Finest Mixed (NO. 762). Pkt., 5 cents. Giant of Pkt., 10 cents.

California (No. 763), Klondyke (No. 764). Each: Pkt., 10 cents. Dwarf Double Mixed (NO. 775) and Tall Double Mixed (NO. 776). Price, each: Packet, 5 cents.

DIANTHUS, HASTINGS' SUPERB MIXED (NO. 778). Old fashioned garden pinks in a magnificent profusion of colors. See illustration below. Price: Packet, 10 cents; 3 pkts., 25 cents.

DAHLIAS, Superb Double Mixed (NO. 793), Cactus Dahlias (NO. 795). Each: Pkt., 15 cents. Double Mixed (No. 792) and Single Mixed (NO. 794). Each: Pkt., 10 cents.

FORGET-ME-NOT, Blue (NO. 804), White (NO. 805), Mixed (NO. 806). Favorites everywhere for beds or borders. Price, each: Packet, 5 cents.

HOLLYHOCKS, Finest Double Mixed Colors (NO. 812). Price: Packet, 10 cents.

MORNING GLORIES, Imperial Japanese (NO. 836).

Price: Packet, 10 cents; 3 pkts., 25 cents.

MEXICAN BURNING BUSH or KOCHIA (NO. 823). Novel plant.

Price: Packet, 10 cents; 3 pkts., 25 cents.

MARIGOLDS, Tall Double African Mixed (NO. 830), Tall French Mixed (NO. 831), Dwarf French Mixed (NO. 832). All free flowering garden favorites. Price, each: Packet, 5 cents.

NASTURTIUMS, Everybody's flower and does well anywhere in the South. See illustration on right.

Hastings' Tall Mixed (NO. 843) and Hastings' Bush or Dwarf Mixed (NO. 842).

Price, each: Packet, 5 cents; oz., 20 cents; 1/4 lb., 75 cents.

MOONFLOWER, White (NO. 833), Blue (NO. 834), Lavender-pink (NO. 835).

Price, each: Packet, 10 cents.

SWEET PEAS. (See illustration.) Finest. Mixed Colors (NO. 883).

Price: Packet, 5 cents; oz., 20 cents; 1/4 lb., 65 cents; lb., \$2.00. Separate colors at same price.

SPENCER TYPE SWEET PEAS with much larger, richer, wavy petalled flowers. Mixed Colors (NO. 896).

Price: Packet, 10 cents; oz., 35 cents; 1/4 lb., \$1.25; lb., \$4.00. Separate colors at same price.

PANSIES, Superb Mixed (NO. 847). The largest and most beautiful. Price: Packet, 25 cents.

PETUNIAS, Fine Mixed (NO. 853), Striped and Blotched (NO. 856). Price: Packet, 25 cents.

POPPIES, Hastings' Superb Mixed (NO. 863). All colors and types.

Price: Packet, 5 cents; oz., 30 cents.

SALVIA or Scarlet Sage (NO. 881). Very popular. Price: Packet, 10 cents; 3 pkts., 25 cents.

SUNFLOWER, Japanese (NO. 882). Looks like a chrysanthemum. Price: Packet, 10 cents; oz., 50 cents.

PHLOX, Finest Mixed (NO. 858). Packet, 5 cents. Grandiflora Mixed (NO. 859). Packet, 10 cents.

VERBENA, Finest Mixed (NO. 910). Packet, 5 cents. Mammoth Mixed (NO. 912). Packet, 15 cents.

ZINNIAS, Tall Double (NO. 925), Half Dwarf Double Mixed (NO. 926). Price, each: Packet, 5 cents.

MIXED FLOWER GARDEN (NO. 840). 100 different flowers mixed.

Price: Packet, 10 cents; 3 pkts., 25 cents.



HASTINGS' UNRIVALED ASTER—PKT., 10C



HASTINGS' SPECIAL MIXED NASTURTIUMS



HASTINGS' SUPERB MIXED DIANTHUS OR GARDEN PINKS (NO. 778)—PACKET, 10 CENTS; 3 PACKETS, 25 CENTS



## Hastings' Geranium Collection—\$1.25 Postpaid

Hastings' Eclipse Collection of Geraniums contains twelve of the very best named varieties for Southern Culture. These varieties are selected from the cream of all the double and semi-double Geraniums grown, and you can depend on their doing fine in any section for outdoor blooming in the summer and for indoor use in winter. The colors are chosen for their brilliancy; a few will be pure white, some will be in the richest shades of pink, and the rest will be the deepest reds.

Our illustration on this page shows the semi-double type of these Eclipse Geraniums and the beautiful heads of flowers you can expect from growing these, our best varieties. They are all strong growing, stocky plants, and will reach you in first-class condition if you order any time before May 1st. After this time the weather becomes too warm to ship satisfactorily, and before this time if extremely cold we hold up shipment until it is safe to ship.

At the time this goes to press we haven't made this selection of varieties, because we are waiting for this year's complete trials. After these trials are gone over thoroughly we will make our selection from them and, believe us, we will give you absolutely the twelve best varieties, all different, regardless of price, in this collection.

Geraniums are easily grown and are one of the most pleasing plants you can have for your home.

**HASTINGS' ECLIPSE GERANIUM COLLECTION, 12 VARIETIES, \$1.25, POSTPAID.**

## Hastings' Chrysanthemum Collection <sup>\$1.25</sup> Postpaid

Hastings' Exhibition Collection of Chrysanthemums are selected with equally as great care as the Geranium Collection, and what we say above is equally applied here. We use the most painstaking care in getting the twelve finest exhibition or show varieties for this collection, and we are sure that they will be more than satisfactory.

The Chrysanthemum holds a distinct place among flowers. Nothing will stand as much neglect and bad treatment without serious injury, and the blooming period comes when most other flowers are gone, being in their prime from September to December. Our collection is the best dozen varieties in size, color and vigorous growth for the South.

**PLANT CHRYSANTHEMUMS**—They are of easiest culture, and last for years in the South.

**HASTINGS' CHRYSANTHEMUM COLLECTION, 12 VARIETIES, \$1.25, POSTPAID.**

## Hastings' Sunny South Rose Collection

**12 Superb Everblooming Roses—\$1.25 Postpaid**

You can never get too many of the beautiful Everblooming Roses, such as we sell. Each year we sell these splendid Rose Collections by the tens of thousands, collections known generally throughout the South as "Hastings' Sunny South Rose Collections."

On the back cover page you will see this splendid collection illustrated in natural colors, every one of these roses an everbloomer and well adapted to the South. We say without reserve that this is the best bargain in rose-buying that you can get—12 Roses: three red, three pink, three white and three yellow varieties, for \$1.25, postpaid.

When the last word has been said for all the other flowers, and they are all beautiful and have their places in our gardens and homes, the Rose is the one plant in the South of which there can never be enough. Our plants are all healthy, well-rooted plants, and satisfactory in every way.

Our Mr. W. R. Hastings paid particular attention to these Roses last year, and especially while the cuttings were made for this year's sales, and is sure you will be pleased with these plants this year.

The varieties that go to make this collection have already been selected, and if you would like to buy the separate varieties as separate from the collection we will be glad to send them to you at 20 cents each, or \$2.00 a dozen.

**THE RED ROSES ARE:**—**EUGENE E. MARLETT**, a rich, bright carmine-scarlet tone; **RED LETTER DAY**, velvety glowing scarlet-crimson buds with a reflex of petals of satiny crimson-scarlet (see illustration of these beautiful buds on this page); **HELEN GOULD**, a solid clear red.

**THE YELLOW ROSES ARE:**—**ALEX HILL GRAY**, a large pure yellow; **SOUVENIR DE PIERRE NOTING**, with orange yellow bordered in carmine; **LADY HILLINGDON**, a deep golden yellow.

**THE WHITE ROSES ARE:**—**WHITE MAMAN COCHET**, pure snow white, although some conditions give it a tinge of pink (there's no finer white rose than this); **K. AUGUSTA VICTORIA**, very double pure white; **COL. R. S. WILLIAMSON**, satiny white with blush center.

**THE PINK ROSES ARE:**—**PINK MAMAN COCHET**, the Queen of all Garden Roses, with rich, clear pink buds opening into silvery-rose flowers, borne on long stems; **PRESIDENT TAFT**, an intense deep pink; and **WELLESLEY**, a very bright, clear pink.

**HASTINGS' SUNNY SOUTH ROSE COLLECTION FOR 1920**—12 EVER-BLOOMING ROSES—\$1.25 POSTPAID.

**SEPARATE VARIETIES: 20 CENTS EACH; \$2.00 A DOZEN.**



SEMI-DOUBLE TYPE OF LIGHT COLORED GERANIUMS



SUPERB YELLOW INCURVED CHRYSANTHEMUM



TYPE OF "RED LETTER DAY" ROSES IN OUR SUNNY SOUTH COLLECTION FOR 1920

DEC 24 1919



**1c Paid**  
 Atlanta, Ga.  
 Permit No. 30

12 SUPERB EVERBLOOMING ROSES—\$1.25 POSTPAID—SEE PAGE 15

HIGH  
 CO.